

Rubato ♩ = 52 Moderato ♩ = 92

14

*f*

20

*p* *mp* *p*

26

*mp* *p*

32

*mp* *mf*

38

8 8

*mf*

51

57 Piu mosso ♩ = 96

拍面板

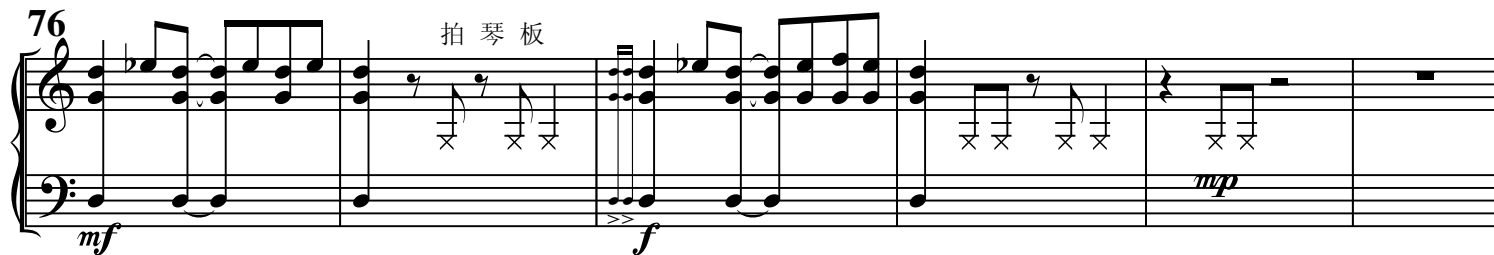
*f* *mp*

上海民族乐团

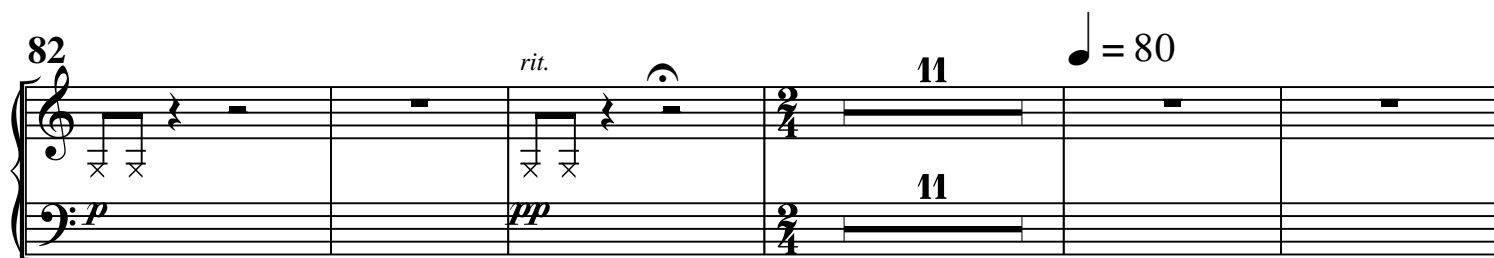
70



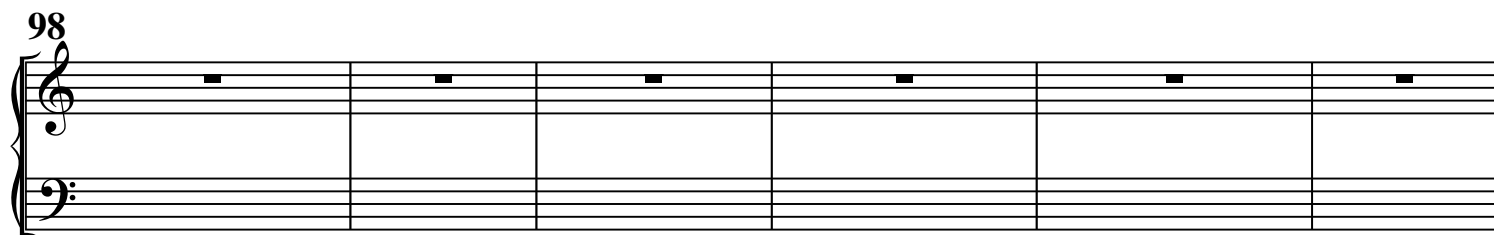
76



82



98



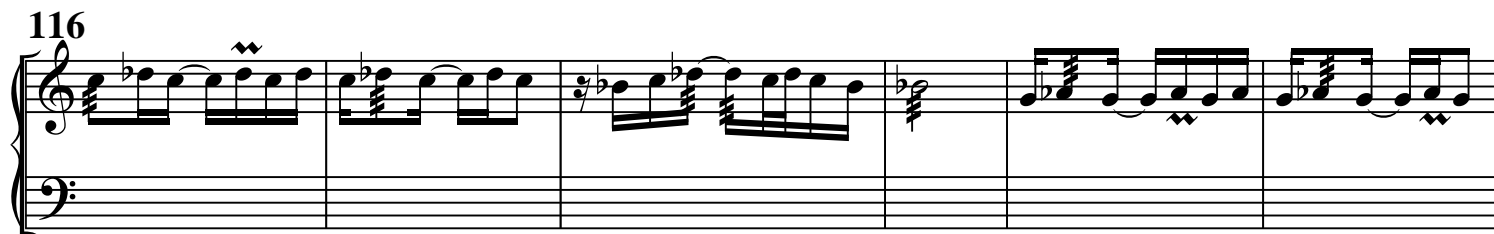
104



110



116



122

*f*

127

*mf*

132

*mf*

140

*mf*

145

*f*

150

*mf*

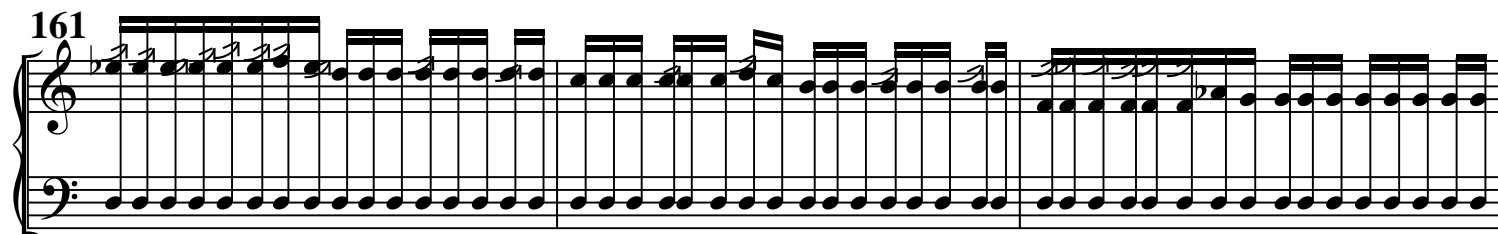
155

*mf*

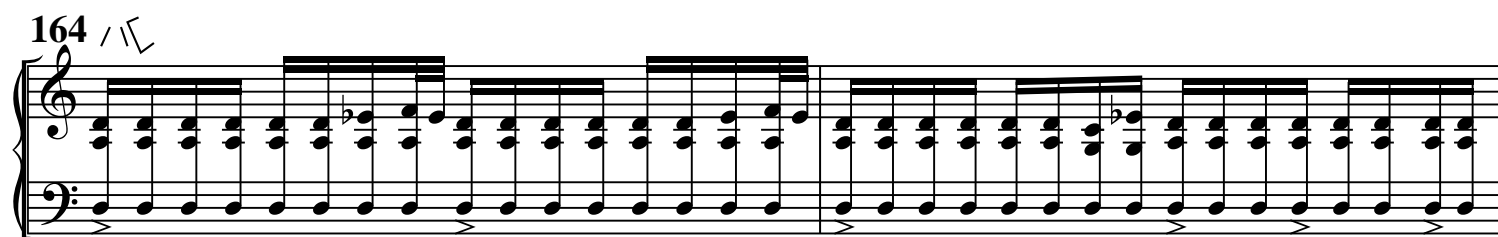
158



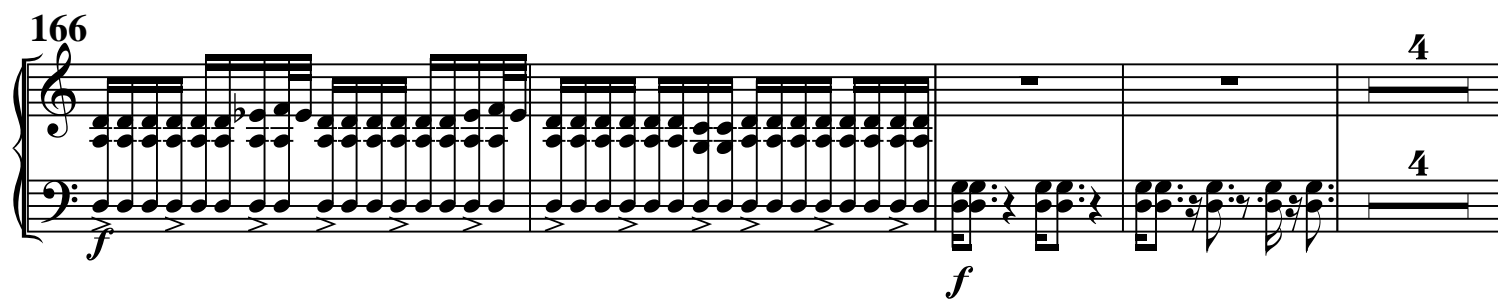
161



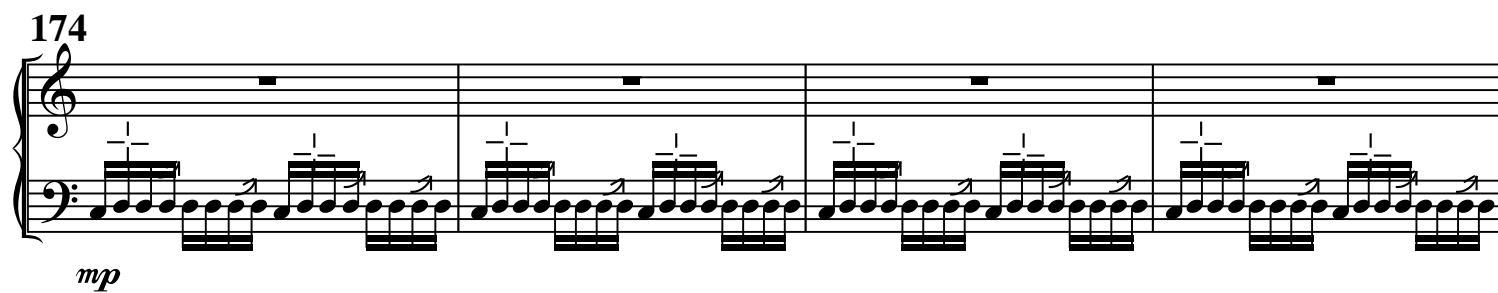
164



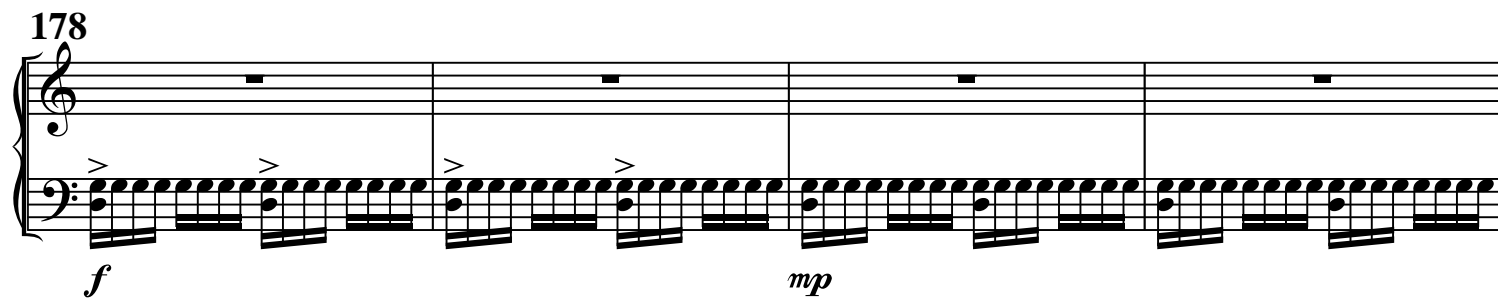
166



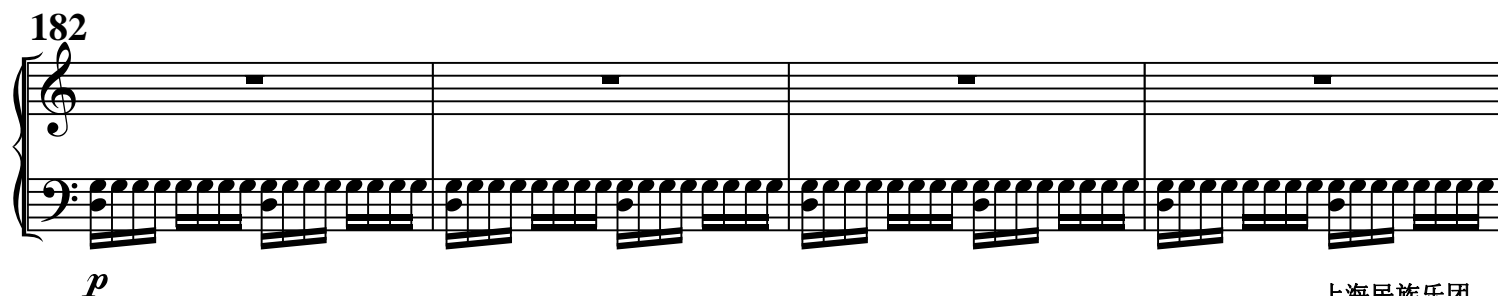
174



178



182



186

Measures 186-189. Measure 186 has a whole rest in the treble and a descending eighth-note pattern in the bass. Measures 187-188 have whole rests in both staves. Measure 189 begins with a 2/4 time signature change and a melodic line in the treble starting with a grace note, while the bass continues with a steady eighth-note accompaniment. The dynamic is *mp*.

190

Measures 190-194. The treble staff features a continuous eighth-note melody with occasional grace notes, while the bass provides a consistent eighth-note accompaniment.

195

Measures 195-200. Measures 195-197 continue the eighth-note patterns. Measures 198-200 show the treble staff with whole rests and the bass staff with eighth notes that include accents and upward bowing strokes. The dynamic is *mp*.

200

Measures 200-205. Both staves feature eighth-note accompaniment with accents and upward bowing strokes in the bass.

205

Measures 205-210. Measures 205-207 have whole rests in the treble and eighth-note accompaniment in the bass. Measures 208-210 feature a more active treble melody with eighth notes and grace notes, while the bass continues with eighth-note accompaniment. The dynamic is *mf*.

210

Measures 210-214. Both staves continue with eighth-note accompaniment, featuring accents and upward bowing strokes in the bass.

214

Measures 214-219. Both staves continue with eighth-note accompaniment, featuring accents and upward bowing strokes in the bass. The dynamic is *f*.

218

*ff*

222

presto ♩ = 184

226

*ff*

231

234

*sfz*